



**S-FD SMART FACTORY TECHNOLOGY DEVELOPMENT JOINT STOCK COMPANY**

**Add Business licene:** Xóm 4, Thôn Hải Bối, Xã Hải Bối, Huyện Đông Anh, Thành phố Hà Nội

**Office:** Tầng 28, tòa Park 4, EURO WINDOW RIVER PARK, cầu Đông Trù,Đông Hội,ĐA,HN

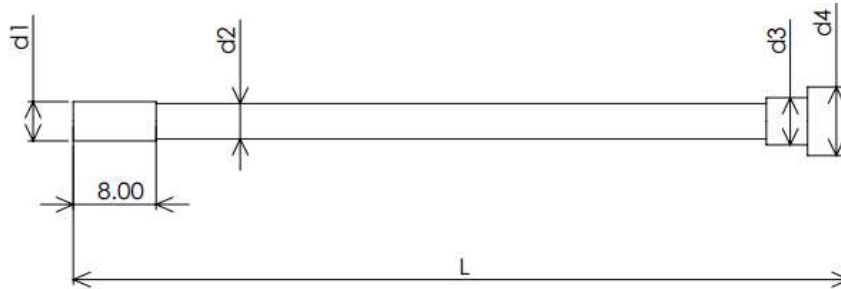
**Tel:** 0968108285-0912655285

**MST:**0109271128

**Email:** dd.nguyen@sfd-jsc.com/sale@sfd-jsc.com/sfd.jsc@gmail.com/svina.sale@gmail.com

**Web:** sfd-jsc.com

**SHAPE**



**Order code Guider:**

**SH-M1-T1-4-3-4-8-10-80**

↓   ↓   ↓   ↓   ↓

1   2   3   4   5

1	TIP
2	Material
3	Tolerant
4	Dimention
5	Hardness

\* Dimention in box or Dimention of customer's drawing

TIP	Material		Type	Tolerant			Dimention					Hardness (HRC)	Other spec				
				Surface	Tolerant	d1	d2	d3	d4	L	Heating		Surface treatment	Packing			
SH	YG8	M1	-	T1	Rz1.6	±0.005 ≡ ±0.01	3	3	3	3	10	10			●		
	KG7	M2					4	4	4	4	15	20			●		
	SB60	M3					5	5	5	5	20	30			●		
	KN70	M4					6	6	6	6	25	40			●		
	HD20	M5		T2	Rz3.2	±0.01 ≡ ±0.02	7	7	7	7	30	50				●	
	SKH51	M6					8	8	8	8	35	60	●			●	
	P9	M7					9	9	9	9	40	70	●			●	
	P16	M8		10	10	10	10	45	80	●			●				
	SKD 11	M9		T3	Rz6.5	±0.01 ≡ ±0.03	11	11	11	11	50	90	●				●
	SKD 61	M10					12	12	12	12	55		●				●
	65Mn	M11					13	13	13	13	60		●				●
	Vonfram-AU	M12		14	14	14	14	65					●			●	
	Molipden	M13		15	15	15	15	70						●			●

\*\*\*\*\*Note: All dimention out of standard can following customer's drawing